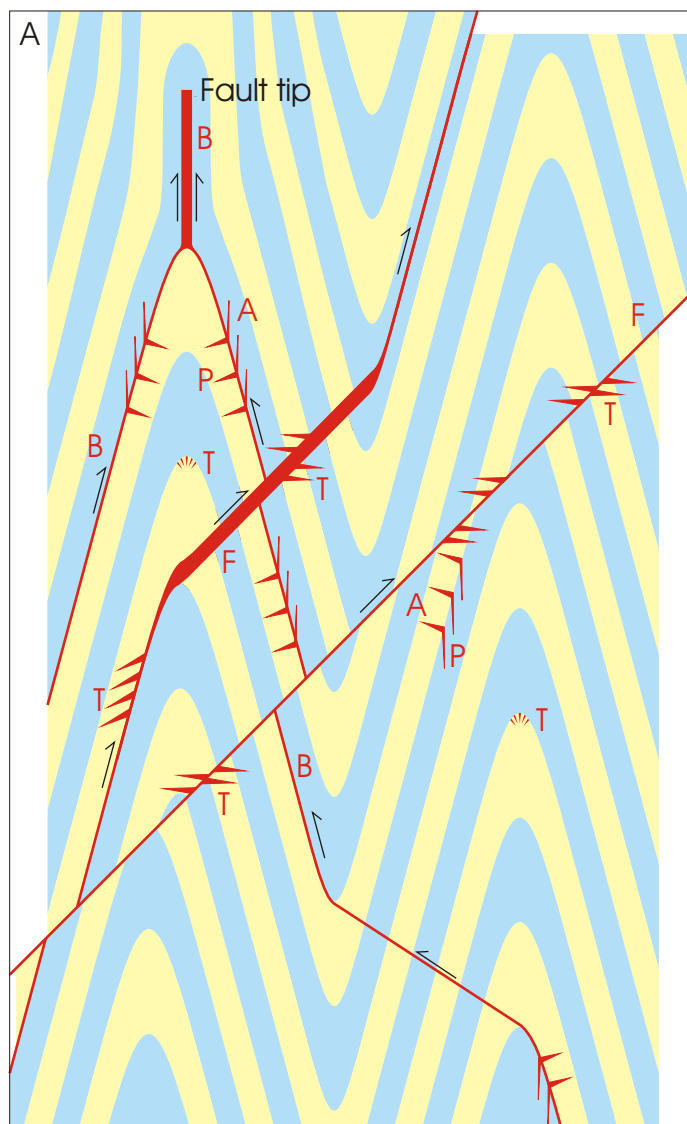
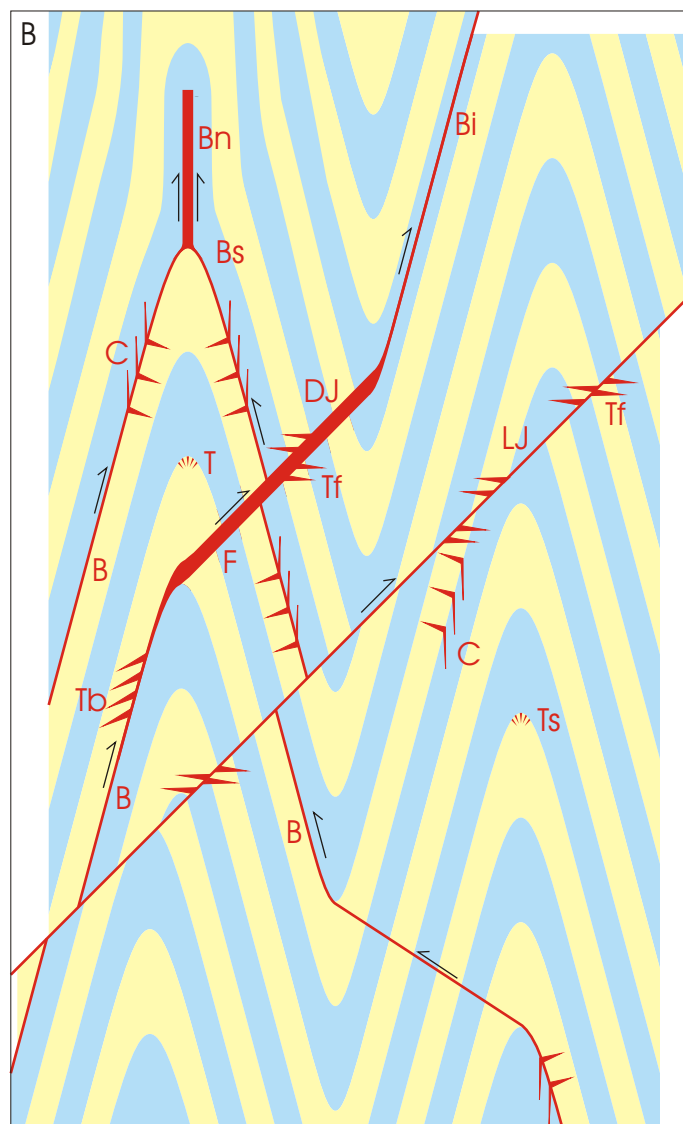


## 4.2. Vein/reef configurations



Fault (F)  
Tensional (T)  
Bedded (B)  
Axial planar (A)  
Perpendicular (P)



Bedded - Bedded (B)  
- Saddle (Bs)  
- Neck (Bn)  
- Indicator (Bi)  
Cleavage (C)  
Fault - Leatherjacket (LJ)  
- Dilatant Jog (DJ)  
Tension - Fault related (Tf)  
- Bedding related (Tb)  
- Hinge related (Th)